



**24 Sussex Street MITCHELTON QLD**

4 1 3

This great 1950's home sits on a relatively flat corner 602m2 lot and has loads of potential!

The property is in line for a significant change in development prospects as it is located in the Fringe Residential Precinct under the proposed Draft Mitchelton Centre Neighbourhood Plan (Statutory Plan).

The Fringe Residential Precinct will comprise predominantly low-medium density multi-unit residential development up to 3 storeys in height.

For more information on the proposed plan and its current status please go to: [www.brisbane.qld.gov.au/neighbourhoodplanning](http://www.brisbane.qld.gov.au/neighbourhoodplanning)

[For full version visit the website](https://www.bowtellwoodhall.com.au)

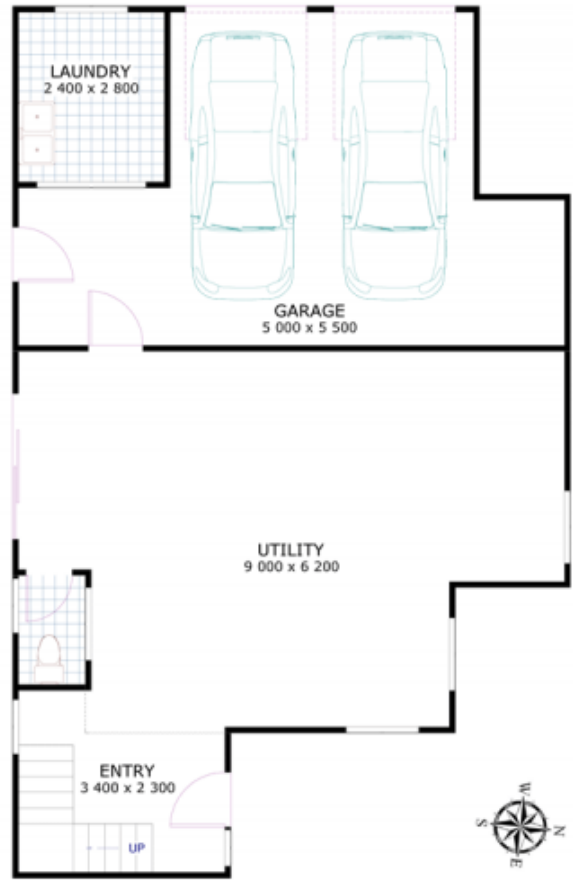
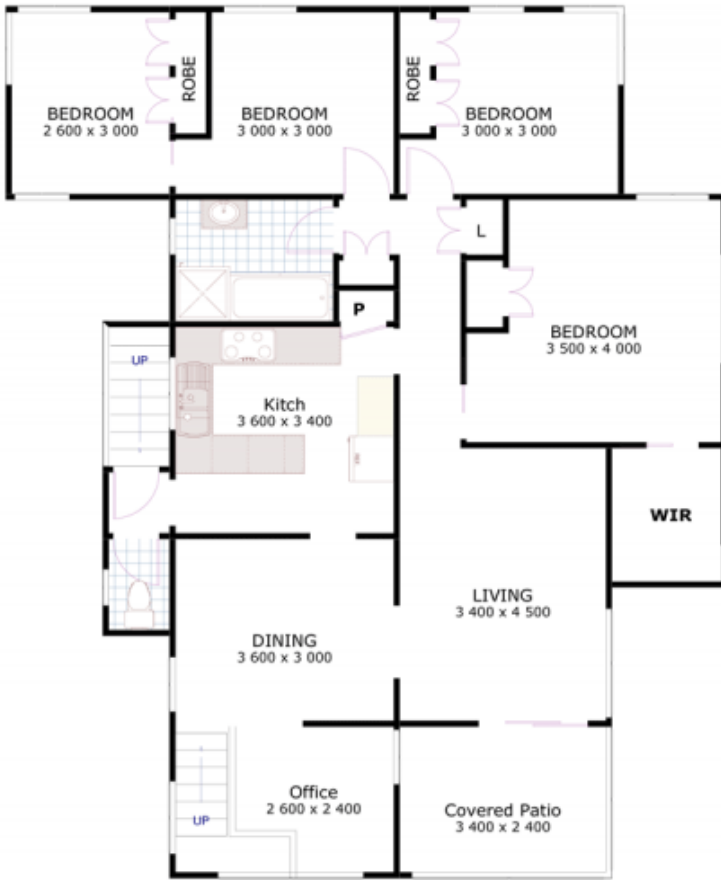
**Type** : House  
**Land Size** : 602 sqm  
**View** : <https://www.bowtellwoodhall.com.au/sale/qld/city-north/mitchelton/residential/house/7444058>



**Steven Bowtell**  
**07 3355 7746**

# 24 Sussex St. Mitchelton QLD

Approx Living Area 123.4 sq m



Whilst every attempt has been made to ensure the accuracy of this floor plan, measurements are approximate and no responsibility is taken for error. This plan is for illustrative purposes only and should be used as such by a prospective purchaser.