



## 21 Gum Leaf Court ALBANY CREEK QLD

4 2 2

Presenting 21 Gum Leaf Court, Albany Creek.

Located on the high side of a lovely cul-de-sac, this fantastic low set residence is resting on an elevated prime 773m<sup>2</sup>\* parcel of land.

At the heart of the home is a generous, light and airy open plan dining and living leading out to a spacious covered outdoor area - the perfect spot for year-round entertaining or just to relax and unwind.

Offering an impressive list of features that you would expect from a contemporary home, there is nothing left to do except move in and enjoy!

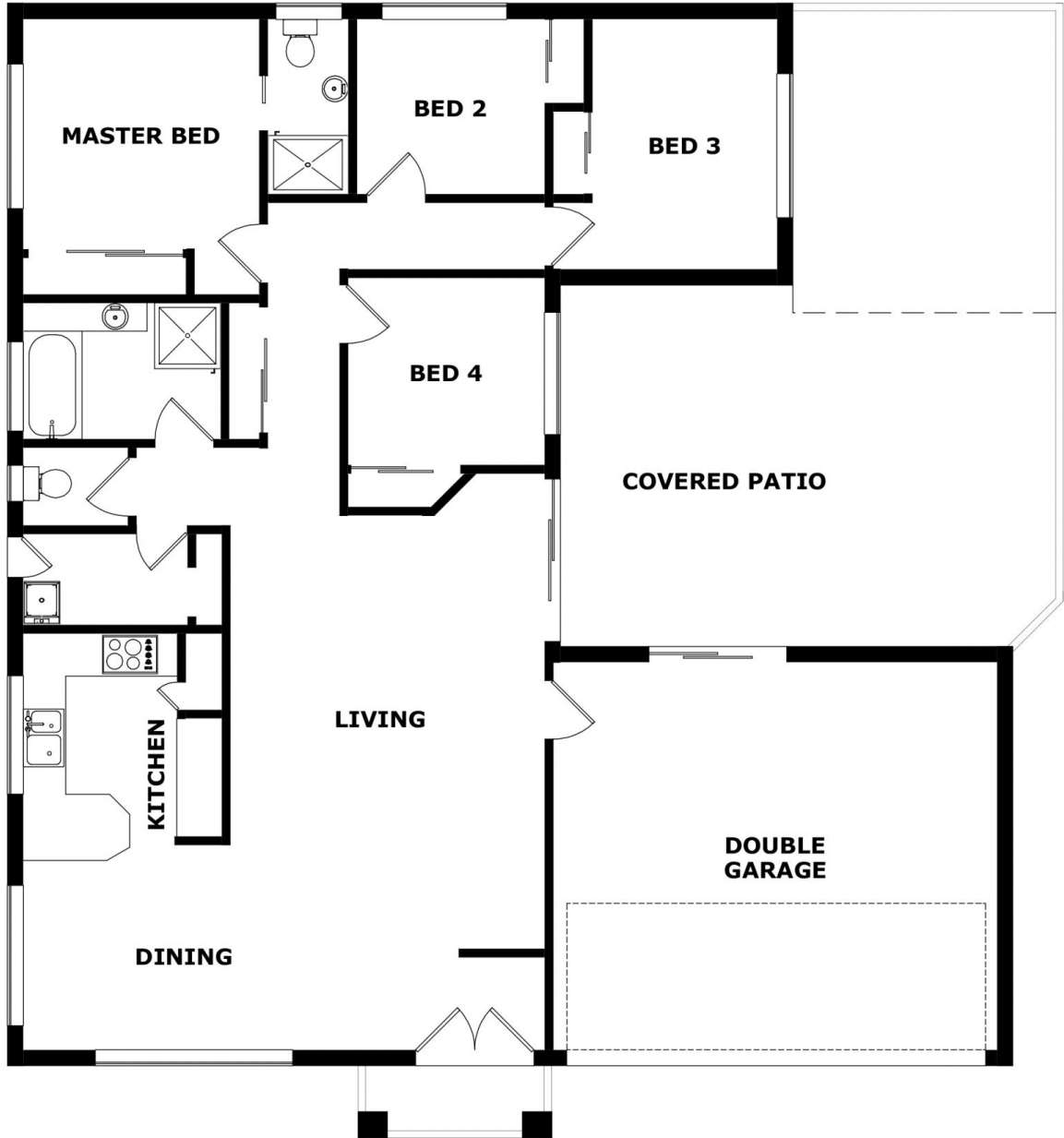
Features

**Land Size** : 773 sqm

**View** : <https://www.bowtellwoodhall.com.au/sale/ql/city-north/albany-creek/residential/house/7444159>



**Torstein Woodhall**  
07 3355 7746



Copyright © www.primepixels.com.au

Whilst every attempt has been made to ensure the accuracy of the floor plans contained here, measurements of doors, windows, rooms and any other items are approximate and no responsibility is taken for any error, omission or misstatement. These plans are for representation purposes only.



**21 GUM LEAF CT, ALBANY CREEK**