



2/31 Mitcham Street GAYTHORNE QLD

3 2 2

Presenting 2/31 Mitcham Street, Gaythorne.

Nestled in a prime leafy corner position in a small complex of just four, number 2/31 presents the perfect opportunity to secure a stylish residence with privacy and space.

Offering two levels of living, at the heart of the home on the lower level is a spacious open plan kitchen, lounge and dining leading out to two courtyards - both perfect spots for entertaining or relaxing.

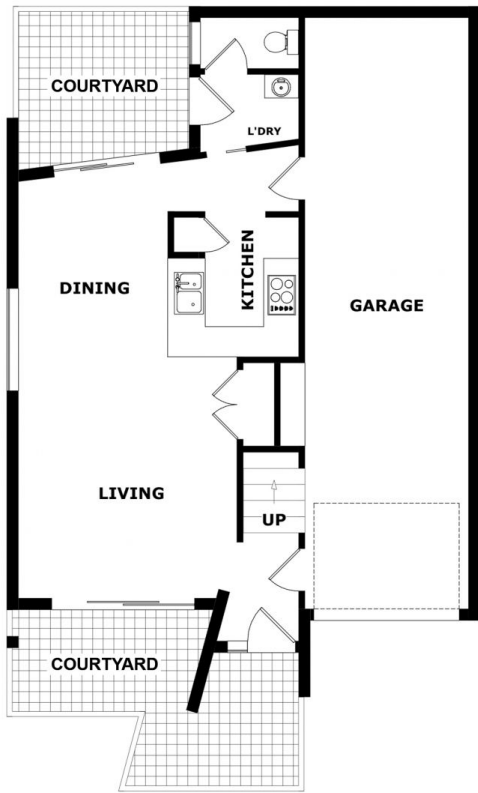
Featuring brand new carpets, a great floorplan and leafy surrounds, there is nothing left to do except move in and enjoy.

Features

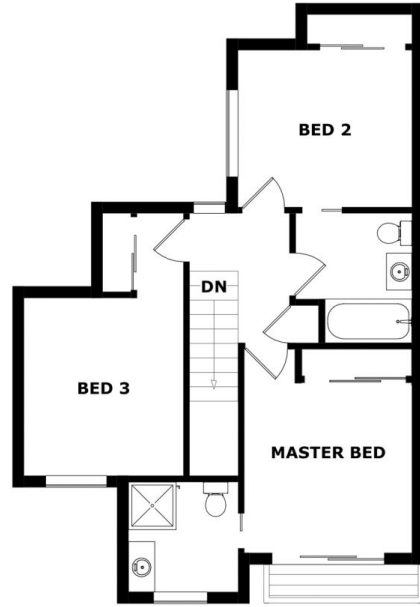
View : <https://www.bowtellwoodhall.com.au/sale/qld/city-north/gaythorne/residential/townhouse/7444163>



Torstein Woodhall
07 3355 7746



GROUND FLOOR



FIRST FLOOR

Copyright © www.primepixels.com.au

Whilst every attempt has been made to ensure the accuracy of the floor plans contained here, measurements of doors, windows, rooms and any other items are approximate and no responsibility is taken for any error, omission or misstatement. These plans are for representation purposes only.



2/31 MITCHAM ST, GAYTHORNE