



26 Marshall Street MITCHELTON QLD

3 1 1

Presenting 26 Marshall Street, Mitchelton.

Resting on a generous parcel of prime land in a convenient pocket in thriving Mitchelton, number 26 is just brimming with potential.

Set on sizeable 637m2 block, living here will have you walking distance to train and moments from the trendy Blackwood Street cafe and bar precinct as well as schooling options.

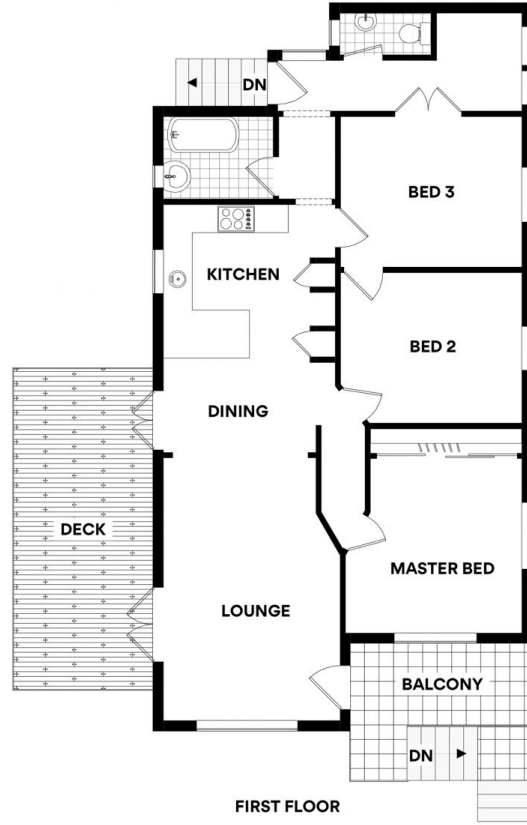
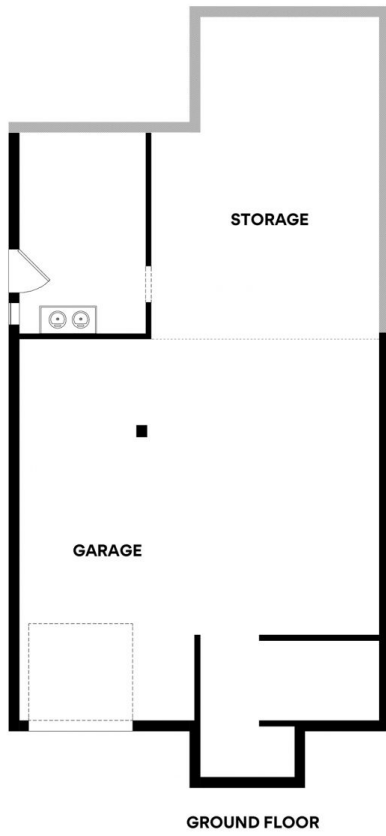
Refreshed over the years and stylishly presented, the residence features open plan lounge, dining and kitchen areas, lovely polished hardwood timber floors throughout and a light, fresh interior.

This wonderful property with fantastic position is an

Land Size : 637 sqm
View : <https://www.bowtellwoodhall.com.au/sale/qld/city-north/mitchelton/residential/house/7444165>



Torstein Woodhall
07 3355 7746



26 Marshall St, Mitchelton

Whilst every attempt has been made to ensure the accuracy of the floor plans contained here, measurements of doors, windows, rooms and any other items are approximate and no responsibility is taken for any error, omission or misstatement. These plans are for representation purposes only. Provided by primepixels.com.au