

### 30 McConaghy Street MITCHELTON QLD

2 1 1

Presenting 30 McConaghy Street, Mitchelton.

Offering a prime 625m<sup>2</sup>\* parcel of LMR3 zoned land in the heart of thriving Mitchelton - this is the limited opportunity you've been searching for.

Currently home to a post-war residence, explore the possibilities of subdivision or redevelopment now, or land bank for down the track.

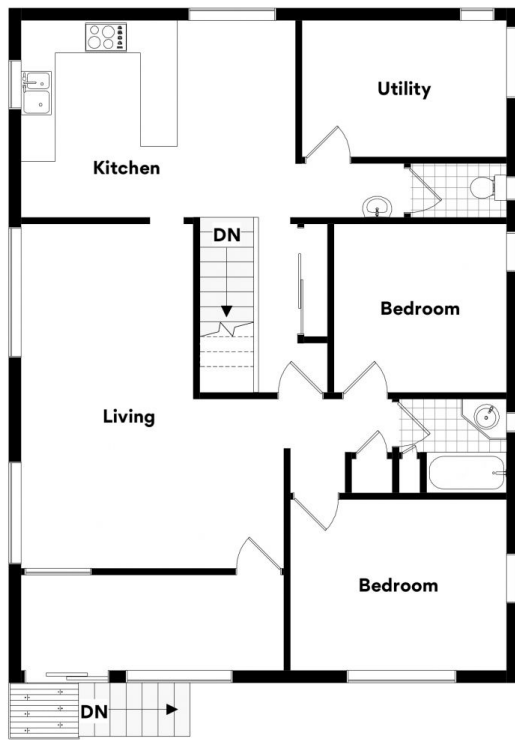
#### Features

Corner block  
LMR3 Low Medium Density Residential (Up to 3 storeys) zone  
No character protection over existing dwelling  
Fringe Residential Precinct Mitchelton Centre

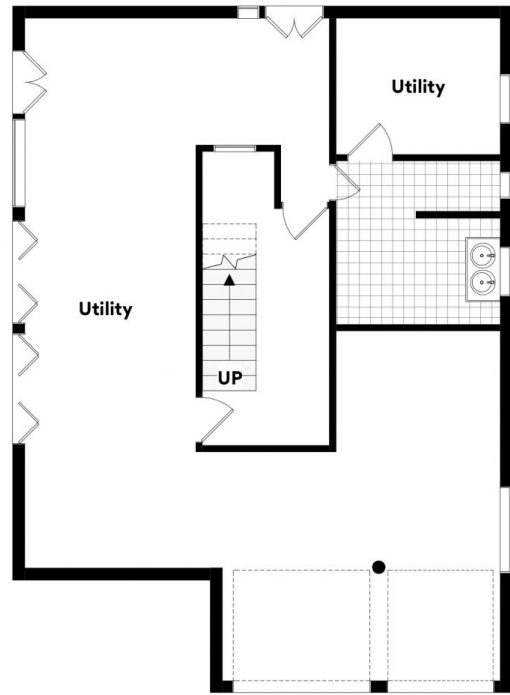
**Land Size** : 625 sqm  
**View** : <https://www.bowtellwoodhall.com.au/sale/ql/city-north/mitchelton/residential/house/7444171>



**Torstein Woodhall**  
07 3355 7746



FIRST FLOOR



GROUND FLOOR



## 30 McConaghy St, Mitchelton

Whilst every attempt has been made to ensure the accuracy of the floor plans contained here, measurements of doors, windows, rooms and any other items are approximate and no responsibility is taken for any error, omission or misstatement. These plans are for representation purposes only. Provided by [primepixels.com.au](http://primepixels.com.au)