



**476-480 Spring Mountain Drive NEW BEITH QLD**

4 2 2

Presenting 476-480 Spring Mountain Drive, New Beith.

Resting in an elevated position in a quiet community of contemporary residences, number 476-480 is the dream package that you've been searching for.

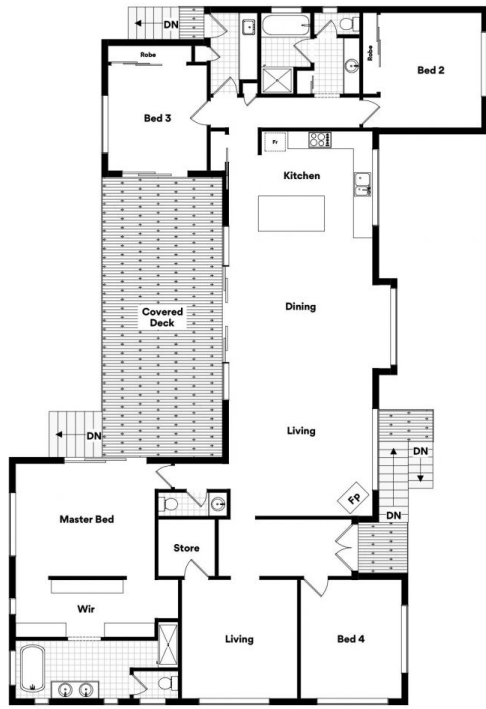
Completed in 2019 and presenting near new, this stunning family home offers style and space with multiple living areas.

At the heart of the residence is an open plan lounge, dining and kitchen - all generously proportioned. The designer kitchen is a dream for the chef and entertainer alike. Centrally positioned to service the internal and external entertaining areas, the kitchen features a wide island bench, farmhouse sink, extensive cabinetry and stainless steel appliances including a 900mm wide oven with gas

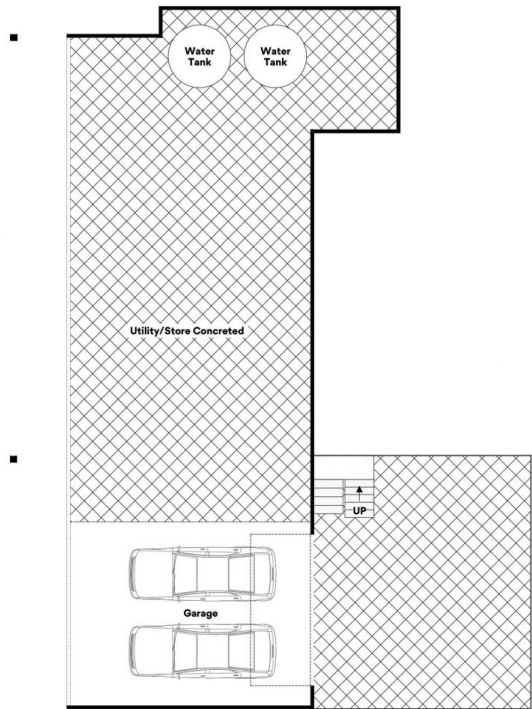
**Land Size** : 2760 sqm  
**View** : <https://www.bowtellwoodhall.com.au/sale/qld/logan/new-beith/residential/house/7444172>



**Torstein Woodhall**  
07 3355 7746



UPPER LEVEL



LOWER LEVEL



## 476-480 Spring Mountain Drive, New Beith

Whilst every attempt has been made to ensure the accuracy of the floor plans contained here, measurements of doors, windows, rooms and any other items are approximate and no responsibility is taken for any error, omission or misstatement. These plans are for representation purposes only. Provided by primepixels.com.au