

### 5/69 Orleigh Street WEST END QLD

2 1 1

Presenting 5/69 Orleigh Street, West End.

Positioned perfectly overlooking the Brisbane River and popular Orleigh Park, number 5/69 presents a limited opportunity to secure a spacious 1970's residence in thriving West End, arguably one of Brisbane's most exciting and vibrant inner-city suburbs.

At the heart of the home is an oversized living space which leads out to a wide, enclosed balcony - the perfect spot to entertain or catch the delightful morning sun. Refreshed in recent years, the kitchen features great storage and extensive bench space and adjoins a meals area, both capturing the natural light.

There are two bedrooms both with built-ins and ceiling fans. The supersized master boasts leafy park and river

**Building Size** : 15 sqm  
**View** : <https://www.bowtellwoodhall.com.au/sale/qld/inner-south/west-end/residential/unit/7444173>



**Torstein Woodhall**  
07 3355 7746

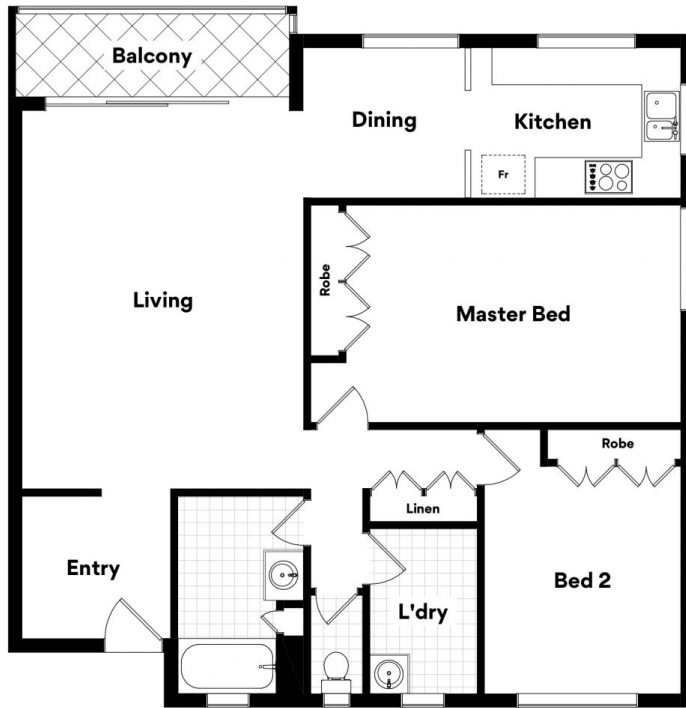
**BUPTitle Areas (approx)**

Main floor - 1270 sq ft = 117.98m<sup>2</sup>

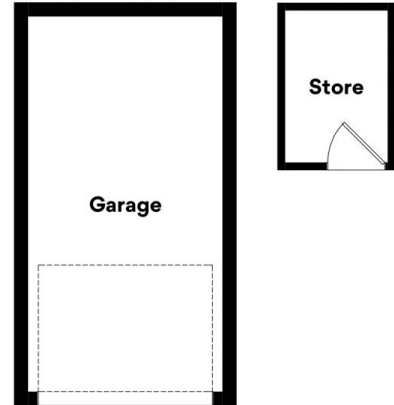
Garage - 215 sq ft = 19.97m<sup>2</sup>

Store - 40 sq ft = 3.716m<sup>2</sup>

**Total - 1525 sq ft = 141.67m<sup>2</sup>**



**FIRST FLOOR**



**GROUND FLOOR**



**5/69 Orleigh St, West End**

Whilst every attempt has been made to ensure the accuracy of the floor plans contained here, measurements of doors, windows, rooms and any other items are approximate and no responsibility is taken for any error, omission or misstatement. These plans are for representation purposes only. Provided by primepixels.com.au