

201/31 Longland Street NEWSTEAD QLD

2 2 1

Presenting 201/31 Longland Street - 'KURV'

Positioned in the heart of thriving Newstead, arguably one of Brisbane's most exciting and liveable suburbs, apartment 201 is your perfect opportunity to secure a stylish residence in a great location.

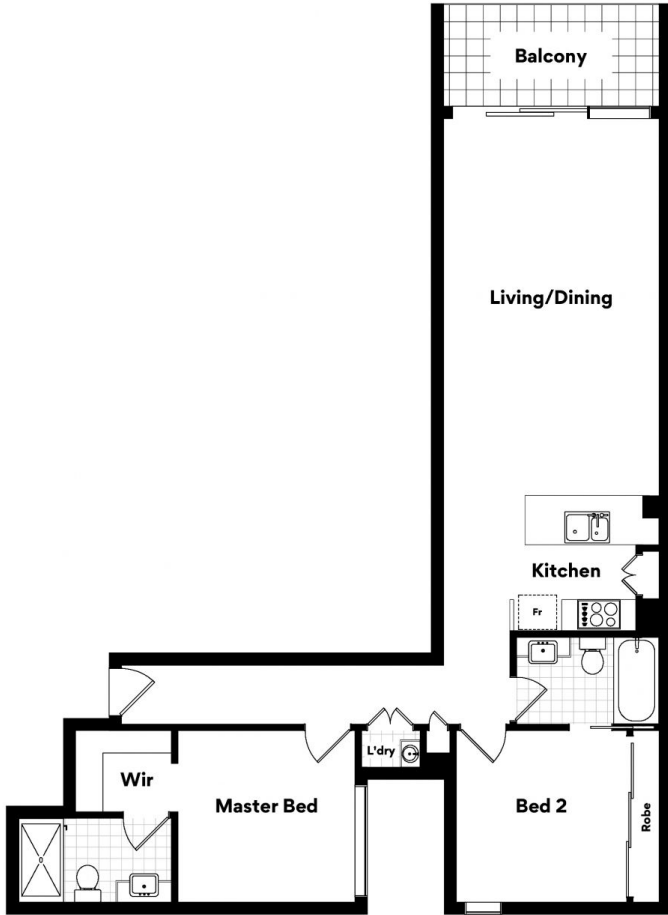
Nestled in a corner position, this desirable property features an open plan living, dining and kitchen area flowing out to a wonderful covered outdoor entertaining space - the ideal spot for relaxing or entertaining friends all year round.

The apartment offers a great sense of comfort and promotes contemporary design at its best. The easy to live in layout delivers two generous bedrooms cleverly positioned away from the main living area.

View : <https://www.bowtellwoodhall.com.au/sale/qld/city-north/newstead/residential/apartment/7444176>



Torstein Woodhall
07 3355 7746



**201/31 Longland St,
Newstead**



Whilst every attempt has been made to ensure the accuracy of the floor plans contained here, measurements of doors, windows, rooms and any other items are approximate and no responsibility is taken for any error, omission or misstatement.

These plans are for representation purposes only. Provided by primepixels.com.au