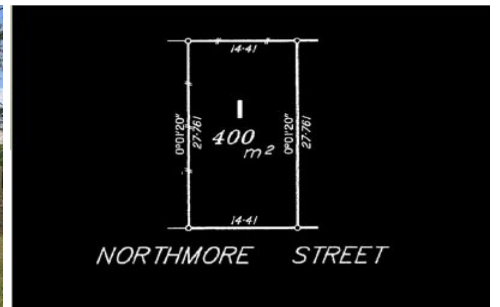




Boundary lines are indicative
and for illustration purposes only



61 Northmore Street MITCHELTON QLD

Presenting 61 Northmore Street, Mitchelton.

Offering a generous 14.41m frontage (approximate) and positioned in the heart of thriving Mitchelton amongst some of the area's newest homes, this is the blank canvas you've been searching for.

Features

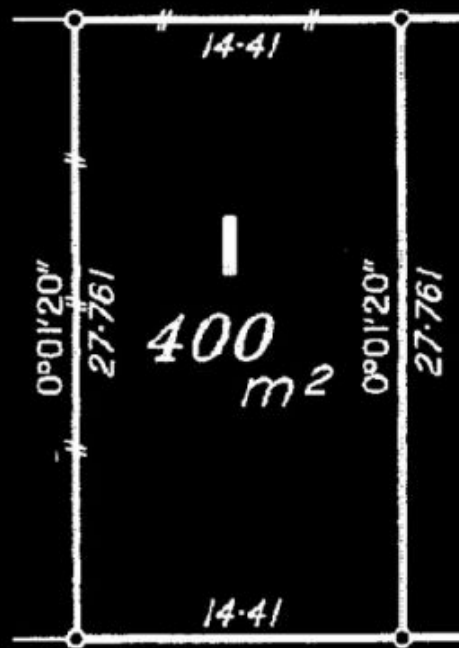
- Great block dimensions allowing for wide home designs
- 14.41m frontage (approximate)
- 27.76m deep (approximate)
- Water service connected
- Sewerage service connected
- Mains gas in street
- Flat block
- No protected vegetation

Land Size : 400 sqm

View : <https://www.bowtellwoodhall.com.au/sale/ql/city-north/mitchelton/residential/land/7444183>



Steven Bowtell
0417 614 041



NORTHMORE STREET